



**Melrose Close, Maidstone, Kent, ME15 6BD**  
**Price £375,000**





### FABULOUS THREE BEDROOM HOME WITH DRIVEWAY IN A SOUGHT AFTER RESIDENTIAL DEVELOPMENT

This well-presented three-bedroom home is situated in the highly sought-after Loose Village and offers spacious and flexible living accommodation, ideal for families.

The ground floor comprises an entrance hall, downstairs cloakroom/utility room, and a generous lounge, which flows through to the open plan kitchen/diner. Both the lounge and kitchen diner open onto the neatly enclosed rear garden, featuring low-maintenance artificial turf. The kitchen diner provides a great space for family meals and entertaining.

Upstairs, there are three bedrooms. The main bedroom benefits from fitted wardrobes and an ensuite shower room, while the other two bedrooms are well-proportioned. The family bathroom serves the remaining bedrooms. Externally, the property boasts a private driveway with space for two cars and a neatly enclosed garden, making it perfect for outdoor living. Additionally, the home benefits from solar tiles, which provide an environmentally friendly and cost-effective source of electricity, helping to reduce energy bills.

Located in the desirable Loose Village, this home is just a short walk from the popular YMCA, offering excellent recreational facilities, including a gym and fitness classes. Loose is known for its picturesque surroundings, friendly community, and excellent local amenities, including charming pubs, shops, and scenic countryside walks. With easy access to Maidstone, this home is a perfect blend of village life and convenience.



## GROUND FLOOR

Entrance Hall

Lounge 16'7" x 12'9" (5.06m x 3.90m)

Kitchen/Dining Room 16'8" x 11'4" (5.09m x 3.46m)

Cloakroom/Utility

## FIRST FLOOR

Bedroom 1 16'4" x 11'5" (4.98m x 3.49m)

En-Suite

Bedroom 2 12'2" x 11'4" (3.73m x 3.46m)

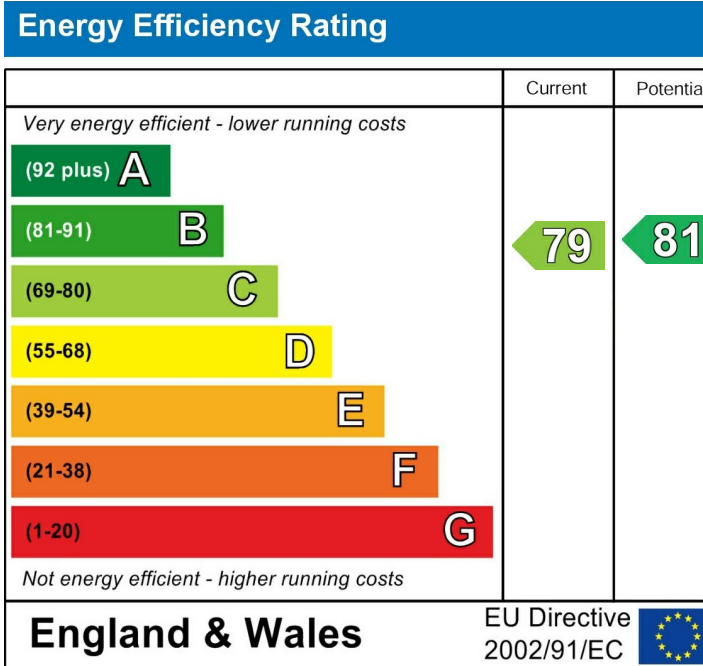
Bedroom 3 7'7" x 7'2" (2.32m x 2.19m)

Family Bathroom

## EXTERNALLY

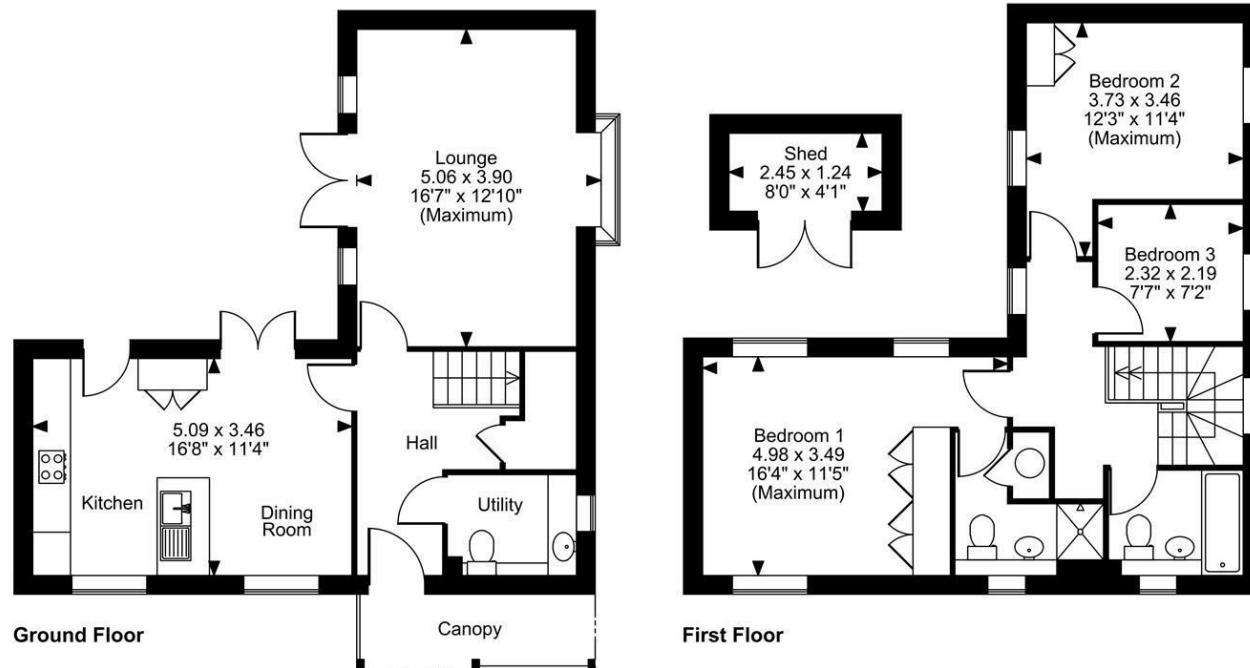
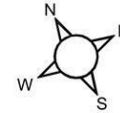
Driveway

Neatly Enclosed Garden





Melrose Close, Maidstone, Kent  
 Approximate Gross Internal Area  
 Main House = 1038 Sq Ft/96 Sq M  
 Shed = 33 Sq Ft/3 Sq M  
 Total = 1071 Sq Ft/99 Sq M



**FOR ILLUSTRATIVE PURPOSES ONLY - NOT TO SCALE**

The position & size of doors, windows, appliances and other features are approximate only.  
 © ehouse. Unauthorised reproduction prohibited. Drawing ref. dig/8644669/SS

